

**Subject : 52<sup>nd</sup> International Paris Air Show - Paris Le Bourget**

**With effect : From 13 to 25 June 2017**

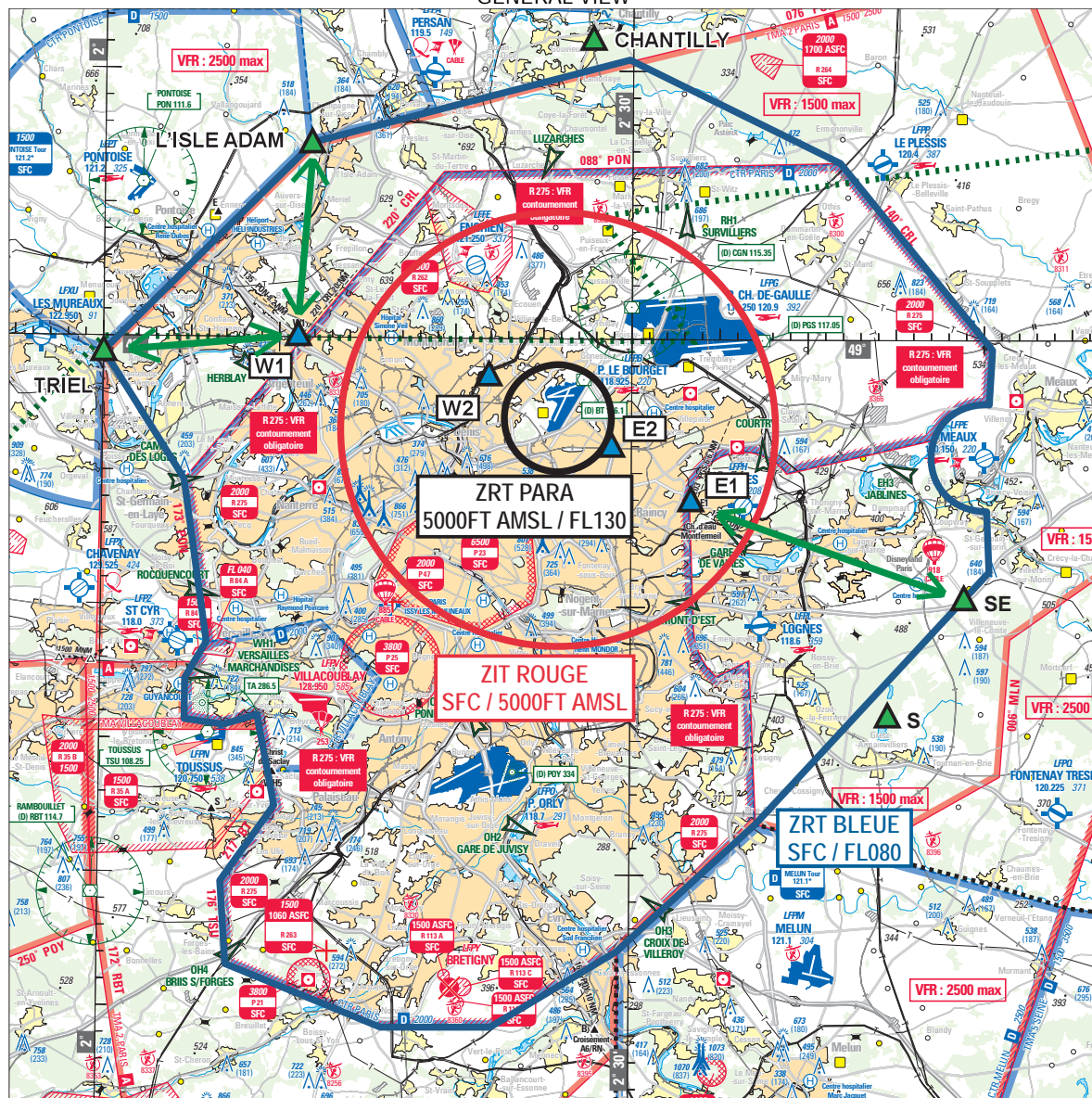
**Location :** FIR : Paris LFFF - AD : Paris Le Bourget LFPB, Paris Charles de Gaulle LFPG, Paris Orly LFPO, Paris Issy les Moulineaux LFPI, Villacoublay Vélizy LFPV, Chelles le Pin LFPH, Enghien Moisselles LFFE, Lognes Emerainville LFPL, Meaux Esbly LFPE, Toussus Le Noble LFPN, Pontoise Corneilles en Vexin LFPT, Beauvais Tillé LFOB, Persan-Beaumont LFPA, Le Plessis-Belleville LFPP, Les Mureaux LFXU, St-Cyr-l'Ecole LFPZ, Chavenay Villepreux LFPX, Beynes-Thiverval LFPF, La Ferté Alais LFFQ, Melun Villaroche LFPM, Fontenay-Tresigny LFPQ, Coulommiers-Voisins LFPK.

Within the framework of the 52<sup>nd</sup> International Paris Air Show, an airspace plan will be implemented. It comprises a Temporary Prohibited Area (ZIT) and 2 Temporary Restricted Areas ("ZRT BLEUE" and "ZRT PARA"), conditions for use of the airspace and certain airfields to be complied with.

The entire plan, including the characteristics of the ZIT and ZRT, the conditions of entry into these areas, the conditions for use of the airspace and their consequences on the use of certain airfields, as well as on the practice of air activities within these areas, is described below:

**1. AIRSPACE PLAN**

**GENERAL VIEW**



Excerpt from SIA chart at scale 1:250,000 Paris Region Edition 1-2017

1.1. ZIT ROUGE, ZRT BLEUE

	ZIT ROUGE	ZRT BLEUE
Dates and times of activity	TUE 13 to SUN 18 JUN 2017 : 1000 - 1530 MON 19 to SUN 25 JUN 2017 : 0600 - 1730 <b>CAUTION: changes to these times may be notified by NOTAM.</b>	
Lateral limits	Circle radius 8.1 Nm centered on Paris Le Bourget exhibition park : 48°56'37"N, 002°25'51"E	49°06'36"N, 002°41'48"E - 48°59'38"N, 002°50'29"E - 48°57'36"N, 002°50'18"E - counterclockwise arc of 2.00 Nm radius centered on 48°55'37"N, 002°50'02"E - 48°51'21"N, 002°50'18"E - 48°41'55"N, 002°37'08"E - 48°37'08"N, 002°29'20"E - 48°34'17"N, 002°22'15"E - 48°34'15"N, 002°16'05"E - 48°36'34"N, 002°07'17"E - 48°39'40"N, 002°06'57"E - 48°42'30"N, 002°09'57"E - 48°43'45"N, 002°09'35"E - 48°45'20"N, 002°09'06"E - 48°45'53"N, 002°08'57"E - 48°45'30"N, 002°07'02"E - 48°45'42"N, 002°04'50"E - 48°47'13"N, 002°04'50"E - 48°47'50"N, 002°05'22"E - 48°48'35"N, 002°06'02"E - 48°54'40"N, 002°04'40"E - 48°59'25"N, 002°00'02"E - 49°07'16"N, 002°11'50"E - 49°10'25"N, 002°29'49"E - 49°06'36"N, 002°41'48"E
Vertical limits	SFC / 5000ft AMSL	SFC / FL080
Airspace exclusions	LF-P 23	- LF-P 21, P 23, P 25, P 46 and P 47 (see AIP ENR 5.1) ; - LF-R 84 A and B, R113 A, B and C and R 263 (cf. AIP ENR 5.1) ; - ZIT ROUGE and ZRT PARA
Entry conditions	<b>Security measures applicable to all flights</b> Comply with the provisions of paragraphs 2, 3 and 8 of this AIP SUP	
	<p><b>All aeronautical activity in the ZIT and entry prohibited except for the following activities, provided that the security measures stipulated in paragraphs 2, 3 and 8 of this AIP SUP are implemented:</b></p> <p><b>Activity 1:</b> aircraft belonging to the French Air Force, customs, police force and gendarmerie and public safety operating within the framework of their missions.</p> <p><b>Activity 2:</b> health aircraft, search and rescue flights, assistance flights, emergency evacuation flights, aircraft having to operate in the area for technical and safety reasons or when avoidance of the area is not compatible with their missions.</p> <p><b>Activities 3 and 4:</b> aircraft outbound from or bound for Le Bourget, aircraft taking part in the International Paris Air Show.</p> <p><b>Activity 5:</b> IFR arrivals/departures at Paris-Charles de Gaulle.</p> <p><b>Activity 8:</b> GAT/VFR aircraft outbound from or bound for Paris-Issy-les-Moulineaux heliport, except for connecting flights with LE BOURGET (see Activity 3).</p> <p>For these aircraft, refer to the specific provisions described in chapters 2, 3, 4, 6 and 8 (especially for accreditation needs) as well as in appendix X.</p>	<p>All ACFT flying into the ZRT BLEUE are subject to security measures applications as provided in paragraphs 2, 3 and 8 of this AIP SUP.</p> <p>The following restrictions apply within the ZRT :</p> <p><b>1. CIV IFR / MIL IFR :</b></p> <ul style="list-style-type: none"> <li>ACFT must fly on the published routes or routes authorised by the usual ATC units.</li> <li>specific measures to control air traffic flow, which could go as far as the temporary suspension of flights, may nevertheless be implemented by MIL Authorities.</li> </ul> <p><b>2. CIV VFR / MIL VFR :</b></p> <p>Only for flights departing from or going to airfields located in the ZRT :</p> <ul style="list-style-type: none"> <li>Modification of VFR routes (see paragraphs 2.4, 2.5 and 3).</li> </ul> <p>Entry into the ZRT subject to radio contact with the applicable ATS unit, 3 minutes before the ZRT specified entry points. A mandatory radio contact will be maintained during the whole transit in the ZRT</p> <ul style="list-style-type: none"> <li>comply with the conditions defined in paragraphs 2 and 3.</li> <li>VFR activities may be suspended without notice by the MIL Authorities</li> </ul> <p><b>3. Additional provisions for CIV VFR / MIL VFR :</b></p> <p>Transit prohibited. Only flights departing from or going to LFPB, LFPI and LFPL AD are admitted.</p> <p>Filing a flight intention with the C2A2 ("Cellule de Coordination de l'activité Aérienne") and prior radio contact with one of the following units:</p> <ul style="list-style-type: none"> <li>the usual ATC units (Paris Le Bourget, Paris Orly, Paris Charles De Gaulle) ;</li> <li>the departure/arrival AD control tower ;</li> <li>any ATS unit able to transmit the identification elements to the units mentioned above;</li> </ul> <p>- Failing that, RAKI INFO : 143.550 MHz (or the back-up CRC notified by NOTAM).</p>
	Follow the ATC instructions provided by the ATS units. Mode A and C transponder mandatory (mode 3/A code imposed). Air users are invited to consult the additional or modification NOTAM everyday.	

	ZIT ROUGE	ZRT BLEUE
<b>Status</b>	When active, the "ZIT ROUGE" replaces the controlled airspace parts and Restricted Area parts with which it overlaps.	When active, the ZRT BLEUE coexists with the controlled airspace parts and replaces the Restricted Area parts with which it overlaps (except the excluded airspace).
<b>Services provided</b>	The air traffic services provided are those of class D airspace and they are provided by the usual ATC units to authorized aircraft flying under CIV / MIL AIR TRAFFIC conditions.	The air traffic services of the class of the controlled airspace parts with which it overlaps are provided by the usual ATC units to authorized aircraft flying under CIV / MIL AIR TRAFFIC conditions.
<b>Managing Authorities</b>	MIL CTL and Reporting Centre (CRC) of CINQ MARS LA PILE Phone: +33 (0)2.47.96.28.63 or +33 (0)2.47.96.30.00 or replacement CRC notified by NOTAM.	
<b>Users information</b>	Actual activity provided by the usual ATC units (Le Bourget, Orly, De Gaulle, Issy les Moulineaux, Villacoublay), and Paris Info, Seine Info, Raki Info (or the back-up CRC published in NOTAM).  Actual time slots provided by : <ul style="list-style-type: none"> <li>- ATIS LE BOURGET 120.000 MHz</li> <li>- RAKI INFO 143.550 MHz or 317.500 MHz (or back-up CRC, FREQ published in NOTAM)</li> <li>- Surveillance Paris 120.075 MHz</li> <li>- PARIS INFO 125.700 MHz, 126.100 MHz or 129.625 MHz</li> <li>- SEINE INFO 118.050 MHz, 120.325 MHz, 134.300 MHz or 134.875 MHz</li> </ul>	
<b>Flight plan</b>	When the VFR flight plan is imposed, it must be transmitted, in addition to the usual addresses, to the Cinq Mars La Pile CRC (LFXOYWYX) and to the replacement CRC.  The accreditation numbers issued must be indicated in box 18 of the flight plan.	
<b>Suspended activities</b>	<b>All activities (with or without winching) of model aircraft flying, aerial work operations (VFR or IFR), aerobatics, parachute dropping, gliding and power gliding, paragliders (whether powered or not), ULM, gyroplane, hang glider, airship, balloon (free or captive balloon), release of lanterns, rockets, and any other flying craft (whether powered or not) with or without persons on board (drones) are prohibited during the activity time slots, with the exception of those previously accredited and related to the International Paris Air Show, and those expressly authorized by the CDAOA (Air Defence and Air Operation Command).</b>  The activity at Enghien and Chelles airfields is suspended.	

## 1.2. ZRT PARA

	ZRT PARA (Parachute dropping within the framework of the International Paris Air Show)
<b>Dates and times of activation</b>	From FRI 23 to SUN 25 JUN 2017 : 1130 - 1530
<b>Lateral limits</b>	Circle radius 2NM centred on : 48°57'02"N- 002°25'50"E
<b>Vertical limits</b>	5000ft AMSL / FL130
<b>Entry conditions</b>	CIV/MIL air traffic: compulsory avoidance except for ACFT cleared by DE GAULLE APP or LE BOURGET TWR.
<b>Status and services provided</b>	When activated, the ZRT replaces the controlled airspace parts and Restricted Area parts with which it overlaps. The air traffic services provided are the ones corresponding to class D and are provided by the usual ATC units to authorized aircraft flying under CIV / MIL AIR TRAFFIC conditions.

## 2. VISUAL PROCEDURES FOR ENTRY AND OPERATIONS IN ZIT / ZRT

A global diagram is provided in Appendix I.

### 2.1 ENTRY AND EXIT POINTS FOR "ZRT BLEUE"

In addition to the SIA chart at scale 1:250,000 Paris region, the SIA chart at scale 1:100,000 « Itinéraires Hélicoptères CTR Paris » and the AIP France VAC AD2 LFPB, the following points are created to enter and exit the ZRT:

NAME	IDENTIFICATION	COORDINATES	CHARACTERISTICS	ATS UNITS
TRIEL	Intersection between the southern tip of Pontoise CTR, Paris TMA 2 and Pontoise TMA 1	48°59'25"N, 002°00'02"E	ZRT entry/exit for Le Bourget	PONTOISE TWR; 121.200 MHz. <i>Outside Pontoise ATS times:</i> <i>Entry: LE BOURGET VFR 135.700 MHz</i> <i>Exit: PONTOISE A/A 121.200 MHz</i>
L'ISLE ADAM	Point of intersection farthest south between Paris TMA 2 and Pontoise CTR	49°07'16"N, 002°11'50"E	ZRT entry/exit for Le Bourget	PONTOISE TWR: 121.200 MHz. <i>Outside Pontoise ATS times:</i> <i>Entry: LE BOURGET VFR 135.700 MHz</i> <i>Exit: PONTOISE A/A 121.200 MHz</i>
SE	Interchange on A4 highway	48°50'26"N, 002°48'58"E	ZRT entry/exit for aircraft serving Le Bourget	LOGNES TWR: 118.600 MHz. <i>Outside Lognes ATS times:</i> <i>LE BOURGET VFR 135.700 MHz</i>
			ZRT entry to serve Lognes. ZRT entry to link MONT D'EST reporting point.	LOGNES TWR: 118.600 MHz. <i>Outside Lognes ATS times:</i> <i>LE BOURGET VFR 135.700 MHz before arriving at SE, then LOGNES A/A 118.600 MHz</i>
			ZRT exit after MONT D'EST.	LOGNES (TWR or A/A): 118.600 MHz
S	Northern end of Armainvilliers lake	48°45'58"N, 002°44'28"E	ZRT exit from Lognes	LOGNES (TWR or A/A): 118.600 MHz
CHANTILLY	« 4 Tours Blanches »	49°11'00"N, 002°27'42"E	ZRT entry to link LUZARCHES reporting point.	Paris Surveillance: 120.075 MHz

**NOTE:** The *Rocquencourt, WH1, WH5 Christ de Saclay, Briis sous Forges* and *Croix de Villeroy* reporting points remain the ZRT entry points to be used by helicopters.

Contact the ATS unit **three minutes** before the ZRT entry point, indicating the same information as that needed to file a flight intent (see paragraph 2.3) as well as the position, heading and altitude.

Display the 3/A transponder provided by C2A2 when filing the flight intent (see paragraph 2.3).

## 2.2. FILING A FLIGHT PLAN

Non-based aircraft outbound from or bound for aerodromes located within "ZIT ROUGE" or "ZRT BLEUE" must file a flight plan, adding to the usual addresses the CRC of Cinq-Mars-La-Pile (LFXOYWYX), as well as the replacing CRC of MONT DE MARSAN (LFBWYWYX) and DRACHENBRONN (LFYAYWYX), and indicating the accreditation numbers in box 18 when required (see paragraph 8.1).

ACFT based inside ZIT ROUGE (Le Bourget) and ZRT BLEUE are not required to file a flight plan. They are nevertheless required to file a flight intent (see paragraph 2.3).

## 2.3. FLIGHT INTENTS

Pilots outbound from or bound for aerodromes located inside ZRT BLEUE operating in visual flight conditions must, on the day of the flight and prior to take-off, contact the Aviation Activity Unit of Coordination (C2A2) to confirm the flight (flight intent filing) and obtain the ZRT BLEUE entry information (3/A transponder code).

This flight intent must be sent to the C2A2:

- via the Air Force liaison unit present at the control tower, during ATS hours only, for the airfields listed in Appendix XI. For ACFT based inside ZIT ROUGE (Le Bourget) and ZRT BLEUE, the flight intent may be transmitted to the liaison unit at first radio contact when the aircraft starts up.
- for the other cases (outside ATS hours at the airfields listed in Appendix XI or airfields with no Air Force liaison unit), telephone contact with the C2A2 is mandatory before take-off (number will be notified by NOTAM).
- in the event of an activity that can be scheduled: by telephone the day before, before 1600 UTC, as well as by radio with the ATS before start-up or 3 minutes before entering the ZRT, in order to confirm the information that has already been transmitted, to provide tracking and take any changes into account.
- in the event of an activity that cannot be scheduled:
  - non-emergency operations: by telephone 2 hours before the flight as well as by radio with the ATS before start-up or 3 minutes before entering the ZRT.
  - emergency operations: as soon as possible regardless of the means.

The following information must be transmitted:

- call sign, registration
- number and type of aircraft,
- from, bound for
- intents / mission type, estimated times,
- accreditation number (aircraft and pilot) for those bound for Le Bourget or needing to operate in the ZIT (see paragraph 8.1)

## 2.4. AIRPLANES (see SIA chart 1 :250 000 RP and AIP France VAC AD2 LFPB and LFPO)

For aircraft outbound from or bound for the following airfields, refer to the corresponding paragraphs:

- Paris-le Bourget: chapter 4
- Paris Charles de Gaulle: chapter 5
- Paris Issy les Moulineaux: chapter 6
- Orly (VFR): paragraph 7.1
- Lognes: paragraph 7.2

## 2.5. HELICOPTERS

Compulsory display of transponder code provided by C2A2 when filing the flight intent (see paragraph 2.3).

The use of helicopter routes located in Paris CTR is limited to flights outbound from or bound for one of the platforms located in this CTR.

Unless otherwise mentioned, the use of helicopter routes located in Paris CTR should comply with the directives described on the SIA chart at scale 1:100,000 Paris CTR helicopter routes.

The following "helicopter" routes located in ZIT ROUGE are closed, except for the flights listed in activities 1, 2, 3, 4 and 8 (see Appendix X):

- Route between LUZARCHES and PONT de NEUILLY,
- Route between PONT de NEUILLY and CAMP DES LOGES or PONT DE SAINT CLOUD,
- Route between HERBLAY and GARE DU BOURGET,
- Route between IH3 - PORTE DE BERCY – PORTE DE BAGNOLET- ROSNY and GARE du BOURGET or AULNAY,
- Route between MONT D'EST - ROSNY,
- Route between COURTRY and AULNAY,
- Route between GARE DE VAIRES and BLANC-MESNIL (can only be used at night),
- Route between OH5 and PORTE DE BERCY or JOINVILLE - NOGENT,
- Route between EH3/JABLINES et RH2/MITRY LE NEUF

A global diagram is provided in Appendix IA.

### 2.5.1. For arrivals:

MONT D'EST and GARE DE VAIRES reporting points will be preceded by a mandatory radio contact 3 minutes before flying over the SE point: Radio contact:

- on LOGNES TWR frequency (118.600 MHz);
- Outside LOGNES ATS hours:
  - To enter the ZRT, contact LE BOURGET VFR (135.700 MHz) 3 minutes before SE, then self-information on LOGNES A/A (118.600 MHz) for transits to MONT D'EST.
  - To exit the ZRT from GARE DE VAIRES and MONT D'EST, change to self-information on LOGNES A/A (118.600 MHz)

HERBLAY reporting point will be preceded by a mandatory radio contact 3 minutes before flying over L'ISLE ADAM or TRIEL points. Radio contact:

- on PONTOISE TWR frequency (121.200 MHz);
- Outside Pontoise ATS hours:
  - To enter the ZRT, contact LE BOURGET VFR (135.700 MHz);
  - To exit the ZRT from HERBLAY, change to self-information on PONTOISE TWR (121.200 MHz).

LUZARCHES reporting point will be preceded by a mandatory report 3 minutes before flying over CHANTILLY point, on the Paris Surveillance frequency (120.075 MHz).

For arrivals via ROCQUENCOURT, WH1, WH5 CHRIST DE SACLAY, BRIIS SUR FORGES and CROIX DE VILLEROY: radio contact with the applicable ATS unit 3 minutes before the ZRT entry point.

### 2.5.2. For departures:

LUZARCHES reporting point will be followed by a mandatory report at the CHANTILLY point, on the Paris Surveillance frequency (120.075 MHz).

When leaving the ZRT, aircraft must fly over all the reporting points while listening to the ATS unit concerned (see arrival procedure), but with no obligation to establish radio contact.

## 3. MODIFICATION OF VISUAL FLIGHT ROUTES IN PARIS CTR

The following provisions are valid from 13 to 25 June 2017 included.

### 3.1 AIRPLANES

(see SIA chart at scale 1:250 000 Paris region and AIP AD2 LFPB)

The Paris Le Bourget LFPB VFR arrival and departure routes can be used in accordance with the conditions defined in paragraph 4.1 below.

## 3.2 HELICOPTERS

The use of helicopter routes located in Paris CTR is limited to flights outbound from or bound for airfields located in this CTR.

Unless otherwise mentioned, the use of helicopter routes located in Paris CTR should comply with the diagrams attached in appendices I to VIII of this AIP SUP and with the altitude described on the SIA chart at scale 1:100 000 Paris CTR helicopter routes.

The NORTHERN ROUTE: LUZARCHES - ILE ST DENIS (SD) cannot be used except for departures from Paris-Le-Bourget airfield via BH3.

During the flight demonstration time slots (see paragraph 4.2 and appendix III of this AIP SUP),

- the portion of the route AULNAY - BH2 - BH4 - ILE ST DENIS (SD) cannot be used,
- the route between Paris-Le-Bourget airfield and Paris-Issy-les-Moulineaux airfield is maintained in both directions: BH1 - AULNAY - BH5 - PORTE DE BAGNOLET - GENTILLY - ISSY-LES-MOULINEAUX (map in appendix IB of this AIP SUP).

Outside the time slots described in paragraph 4.1 of this AIP SUP, a traffic circle will be implemented between Paris-Le-Bourget (LFPB) airfield and Paris-Issy-les-Moulineaux (LFPI) airfield in accordance with the following provisions:

- From **LFPB to LFPI**: LFPB - BH2 - BH4 - ILE ST DENIS (SD) - PONT D'ASNIERES - PONT DE NEUILLY - LFPI  
**Note**: with ATC clearance, helicopter traffic may be redirected to: BH2 - BH5 -PORTE DE BAGNOLET - GENTILLY – LFPI
- From **LFPI to LFPB**: LFPI - GENTILLY - PORTE DE BAGNOLET - BH5 - AULNAY - BH1 - LFPB
- Two temporary routes will be established for twin-engined helicopters (see appendix IB of this AIP SUP):
  - o From **CAMP DES LOGES** to **LFPB**: route can only be used at night, at an altitude of 1500 ft AMSL: Follow Highway A86 from CARRIERES SUR SEINE to BH2 then the usual route to LA CROIX BLANCHE or BH1.
  - o From **BOBIGNY** to **PONT D'ASNIERES**: routes reserved for performance class 1 to 2 twin-engined helicopters, for use during the day only, at an altitude of 1500 ft AMSL or 1000 ft AMSL with clearance depending on the traffic, flight and/or weather conditions: BOBIGNY- follow CANAL de L'OURCQ - PANTIN – follow PERIPHERIQUE NORD - CLICHY – follow SNCF SAINT LAZARE TRACKS - PONT D'ASNIERES.

## 4. SPECIFIC PROVISIONS AT PARIS LE BOURGET AD (LFPB)

(valid from 13 to 25 June 2017 included)

Do not fly over the public area under any circumstances.

### 4.1 PARTICULAR PROVISIONS APPLICABLE TO AIRPLANES

#### 4.1.1. Activities restrictions:

##### 4.1.1.1. Provisional time slots for suspension of all aircraft activity:

From 14 to 18 June 2017 : 1130 – 1430.

From 19 to 22 June 2017 : 1130 – 1430.

From 23 to 25 June 2017 : 1030 – 1530.

These time slots will be confirmed by NOTAM the day before and announced on FREQ:

ATIS LE BOURGET 120.000 MHz.

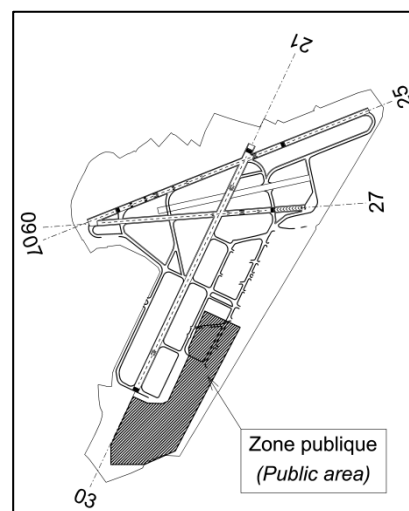
##### 4.1.1.2. Provisional time slots for restriction of aircraft activity:

30 minutes on either side of the above-mentioned time slots for suspension. Confirmed by NOTAM the day before.

#### 4.1.2. Special provisions:

##### 4.1.2.1. Activity restriction

- There will be variable conditions for aircraft traffic in the southern part of the airfield: taxiways V1, V2, C, C1 and C11 will become aprons at certain times. When these taxiways become aprons, particular signage will be visible throughout the area (flag flying at intersection C1/V1). The aircraft traffic rules for this area will be the ones for an apron, i.e. no radio contact with ATC and movement under the responsibility of the designated ground handling agent.
- The available departure and arrival time slots are limited during certain times of the day, and their number may be smaller than what is requested.
- Paris Le Bourget airfield cannot be used as an alternate airfield during the activity time slots of the ZIT ROUGE and ZRT BLEUE (see paragraph 1.1 of this AIP SUP).
- Paris Le Bourget airfield cannot be used during the time slots defined above except for assistance, rescue or public safety flights when avoidance of the area is not compatible with their mission. MEDEVAC (hospital) flights are not allowed during these time slots.
- VFR operations are only authorized for aircraft the maximum take-off weight of which is less than or equal to 20 tons, flying at an IAS of no more than 200 kt.
- Only the aircraft used for the International Paris Air Show and those of based airlines can park on Paris Le Bourget airfield.
- Beware of dense helicopter traffic between ECHO 2 and the Le Bourget airfield.



#### 4.1.2.2. Additional provisions for Aircraft visual arrivals and departures

For authorized aircraft bound for Le Bourget, the visual arrival and departure procedures are modified:  
Compulsory display of the transponder code provided by C2A2 when filing the flight intent (see chapter 2.3).

See "GENERAL VIEW" on page 1

##### 4.1.2.2.1. For arrivals :

- W1 reporting point will be preceded by a compulsory report at L'ISLE ADAM or TRIEL points: radio contact with PONTOISE TWR (121.200 MHz) 3 minutes before flying over L'ISLE ADAM or TRIEL points, as well as authorization from LE BOURGET VFR (135.700 MHz) 5 minutes before flying over W1 to proceed to the airfield.

Outside Pontoise ATS hours, make direct contact with LE BOURGET VFR (135.700 MHz) 3 minutes before flying over L'ISLE ADAM or TRIEL points.

- E1 reporting point will be preceded by a compulsory report at SE point: radio contact with LOGNES TWR (118.600 MHz) 3 minutes before SE point, as well as authorization from LE BOURGET VFR (135.700 MHz) 5 minutes before flying over E1 to continue to the airfield.

Outside Lognes ATS hours, make direct contact with LE BOURGET VFR (135.700 MHz) 3 minutes before SE point.

- When weather conditions do not allow aircraft to fly at the prescribed altitudes, the latter may be authorized to follow routes at an altitude enabling them to remain in view of the ground. This altitude will always be at least 1300ft AMSL.

##### 4.1.2.2.2. For departures :

- W1 reporting point will be followed by a compulsory flyover at L'ISLE ADAM or TRIEL points: announce the flight on PONTOISE TWR (121.200 MHz) after passing W1 point, released by LE BOURGET TWR (118.925 MHz) or LE BOURGET VFR (135.700 MHz), towards L'ISLE ADAM or TRIEL points.

- E1 reporting point will be followed by a compulsory flyover at SE point: announce the flight on LOGNES TWR (118.600 MHz) after passing E1 point, released by LE BOURGET TWR (118.925 MHz) or LE BOURGET VFR (135.700 MHz) towards SE point.

Outside Lognes ATS hours, announce the flight on LE BOURGET VFR (135.700 MHz) after passing E1 point, towards SE point.

**Note:** Points W1, W2, E1 and E2 are defined in the AIP France VAC, AD2 LFPB APP01.

## 4.2. PARTICULAR PROVISIONS APPLICABLE TO HELICOPTERS

### 4.2.1. Establishment of a temporary heliport at Paris Le Bourget AD (see Appendix VIII)

The ground infrastructure is permanently modified but the heliport can only be used during the following time slots:

- From 14 to 18 June 2017 included : 1000-1530
- From 19 to 25 June 2017 included : 0500-1700

In addition, the apron (stands X1 to X6 + Y2 and Y3) is CLOSED on

- WED 14 June 2017 : 1000-1530
- SAT 17 June 2017 : 1000-1530
- SUN 18 June 2017 : 1000-1530
- SAT 24 June 2017 : 0500-1700
- SUN 25 June 2017 : 0500-1700

Stand Y1 is dedicated to State services.

The transportation of passengers or crew in the reserved area from or to these aprons is coordinated locally.

All helicopter traffic is directed towards this temporary heliport (see appendices IV to VIII: site plan, departure and arrival patterns, detailed plan of parking stands and taxiways).

It includes a FATO ("TLOF H1" and "TLOF H2") which can be used for performance classes 2 and 3 for helicopters certified in categories A and B.

During take-off maneuvers (H2 facing west) and landing maneuvers (H1 facing east), do not overshoot extended taxiway B to the west.

Special instructions of use for single-engined helicopters:

- Inbound facing east towards "H1", maintain 1000 ft AMSL (800 ft AGL) until the west edge of Road D317.
- Outbound facing west from "H2", quickly climb to 1000 ft AMSL (800 ft AGL).

The helicopter parking stands are indicated on the ground by identification markings (see Appendix VIII).

### 4.2.2 Radio contact

Contact LE BOURGET VFR 135.700 MHz 5 minutes before start-up for outbound flights and 3 minutes before the first reporting point (RH2, BH5 or PORTE DE BAGNOLET, BH3, GENEVILLIERS, PONT D'ASNIERES, GARE DE VAIRES) for inbound flights.

### 4.2.3 Routes

In addition to the provisions defined in paragraph 4.2.2 of this AIP SUP, clearance for departure may be given on the following routes:

- LFPB - BH3 - ILE ST DENIS (SD) - PONT DE NEUILLY
- LFPB - BH3 - LUZARCHES

### 4.3 FREQUENCIES

All aircraft using Paris Le Bourget airfield must be equipped with a VHF 760-channel transceiver minimum.

In addition to the frequencies published in the AIP, the following frequency will be used:

- LE BOURGET VFR : 135.700 MHz

## 5. SPECIFIC PROVISIONS AT PARIS CHARLES DE GAULLE AD (LFPG)

(restrictions of use of runways 08L/R and 26L/R valid from 13 to 25 June 2017 included)

Flight demonstrations during the International Paris Air Show have an impact on the west funnel of runways 08L/R and 26L/R.

The times given below are provisional, they correspond to the longest time slots and will be confirmed by DE GAULLE APPROCHE and DE GAULLE ATIS (128.225 MHz FR - 127.125 MHz ENG) in real time.

Precise conditions of use are given in real time by these authorities on the same frequencies.

### 5.1. From 1330 to 1400 (UTC)

Because of the interference between some SIAE flight demonstrations and the Paris Charles de Gaulle AD routes, the operation of RWY 08L/R and 26L/R is modified as follows:

- **East-facing configuration** : RWY 08L and 08R can be used for take offs only;
- **West-facing configuration** : RWY 26L and 26R can be used for landings only;
- **Missed approach 26L/R** : see Paragraph 5.3 below.

### 5.2. From 1130 to 1330 and from 1400 to 1430 (UTC)

The operation of departures on RWY 08L/R and of all traffic on RWY 09L/R and 27L/R remains as usual.

The missed approach on arrivals on RWY 26L/R is modified as defined in paragraph 5.3 below.

The operation of arrivals on RWY 08L/R and departures RWY 26 L/R is modified as follows:

#### - East-facing configuration:

If the weather conditions are : horizontal visibility  $\geq$  5 km and ceiling  $\geq$  3000 ft,

- o RWY 08R can be used for landing, by wake turbulence M and L aircraft conducting an approach on ILS 08L or RNAV 08L followed by visual manoeuvring to land on RWY 08R ;
- o RWY 08L can be used for landing, by wake turbulence M and L aircraft conducting an approach on ILS 08L or RNAV 08L.
- o On final ILS 08L or RNAV 08L approach, the visual manoeuvring towards RWY 08R should not be started before 6.6 NM DME PGS (see Appendix 9).  
horizontal visibility  $<$  5 km or ceiling  $<$  3000ft
- o RWY 08R cannot be used for landing.
- o RWY 08L can be used for take-off and landing

#### - West-facing configuration:

Departures from runway 26R are available for aircraft in M and L wake turbulence categories only. They must reach 4000 FT AMSL, no later than 6.3 NM DME PGS; taxiway R1 is the only TWY usable to line up on RWY 26R to make it easier to comply with this limitation.

If a technical or weather event occurring after take-off prevents this limitation from being complied with, or the departure path from being followed precisely, the crew must inform ATC as soon as possible.

The missed approach on RWY 26L/R is modified as defined in paragraph 5.3 below.

### 5.3. From 1130 to 1430 : Missed approach on RWY 26L/R

Missed approaches 26L/R and aerodrome minima associated with ILS, LOC/DME and RNAV (except LPV) approaches are modified as follows: "**Missed approach 26L/R**: maintain runway heading and climb up to 800 FT AMSL, then turn left at heading 180°, climb up to 4000 FT AMSL, then radar guidance." The implementation of this procedure will be announced on DE GAULLE ATIS.

FNA ILS DSU and LOC/DME DSU RWY 26L					FNA ILS GAU and LOC/DME PGS RWY 26R				
CAT	ILS		LOC + DME ATT DSU		CAT	ILS		LOC + DME PGS	
	DA (H)	RVR	MDA (H)	RVR		DA (H)	RVR	MDA (H)	RVR
A	720 (400)	1200	720 (400)	1200	A	710 (390)	1100	710 (390)	1100
B	730 (410)	1200	730 (410)	1200	B	720 (400)	1100	720 (400)	1100
C	740 (420)	1200	740 (420)	1200	C	730 (410)	1200	730 (410)	1200
D	750 (430)	1300	750 (430)	1300	D	740 (420)	1200	740 (420)	1200

FNA RNAV (GNSS) RWY26L					FNA RNAV (GNSS) RWY26R				
CAT	LNAV-VNAV		LNAV		CAT	LNAV-VNAV		LNAV	
	DA (H)	RVR	MDA (H)	RVR		DA (H)	RVR	MDA (H)	RVR
A	760 (440)	1300	800 (480)	1500	A	710 (390)	1100	740 (420)	1200
B	770 (450)	1400	820 (500)	1500	B	720 (400)	1100	760 (440)	1300
C	790 (470)	1500	840 (530)	1700	C	740 (420)	1200	780 (460)	1400
D	820 (500)	1500	870 (550)	1800	D	770 (450)	1400	800 (490)	1500



## 6. SPECIFIC PROVISIONS AT PARIS ISSY LES MOULINEAUX (LFPI) HELIPORT

(valid from 19 to 26 June 2017 included)

The use of Paris-Issy Les Molineaux heliport is reserved for those helicopters on the pre-established authorized flight lists.

Traffic at Paris-Issy Les Molineaux heliport is limited to 200 movements during the week and 120 movements on Saturdays and Sundays (1 movement is 1 landing or 1 take-off)

These measures do not concern humanitarian flights, medical evacuation flights or flights performed by State aircraft.

### 6.1. LISTS OF AUTHORIZED FLIGHTS AND MANAGEMENT METHODS

Users planning an outbound or inbound flight from or to Paris-Issy-les-Molineaux heliport should contact Paris Aéroport General Aviation and Le Bourget Operations Unit as soon as possible and no later than the day before the flight before 1600 UTC; these authorities will establish a daily list of authorized movements within the limits of the defined quotas.

E-Mail : [environnementissy@adp.fr](mailto:environnementissy@adp.fr) ; fax : +33(0)1.48.62.00.61

A forecast of flights performed by the exhibitors must be sent to the International Paris Air Show no later than 29 May 2017.

Phone: +33 (0) 1.41.69.02.55 ; fax: +33 (0) 1.41.69.24.85

These lists shall be sent to the ATC services, to the BPV (Flight Demonstration Office) and to the C2A2.

### 6.2. INFORMATION TO BE PROVIDED

The following information must be given:

- helicopter registration;
- type of aircraft;
- departure and/or arrival airfields;
- ETA and/or ETD Paris Issy Les Molineaux heliport and/or Paris Le Bourget airfield if it serves this platform;
- Beneficiary;
- Ground handling company, if it serves Paris-Le Bourget;
- information on the person being transported when a VIP;
- Contact details (telephone, fax)

### 6.3. RESTRICTIONS FOR AUTHORIZED FLIGHTS

Changes to "helicopter" transit routes and arrival/departure procedure: see paragraph 3.2

Aircraft which need to enter ZIT ROUGE from the South (route IH3 – PORTE DE BERCY – JOINVILLE – NOGENT – MONT D'EST, or IH2 – PONT DE NEUILLY – CARRIERES SUR SEINE) must be accredited (see paragraph 8.1).

When connecting with Paris Le Bourget, helicopters, crew and passengers are systematically controlled before take-off.

## 7. SPECIFIC PROVISIONS AT OTHER AIRFIELDS

### 7.1. PARIS ONLY (LFPO) : RESTRICTIONS :

The POMPADOUR-ORMESSON-VAIRES INTERSECTION route is closed (LFPO AD 2 and AD 3 charts).

Compliance with the procedures described in the visual arrival and departure charts, including radio contact 3 minutes before entering Paris CTR with the ATS unit concerned while displaying the transponder code issued by the C2A2 when the flight intent was filed (see paragraph 2.3).

- accessible only to multi-engined aircraft operating under IFR conditions;
- peak traffic time slots to be avoided:  
ARRIVALS: 0500-0630 / 1600-1930;  
DEPARTURES: 0600-0730 / 1700-1900.

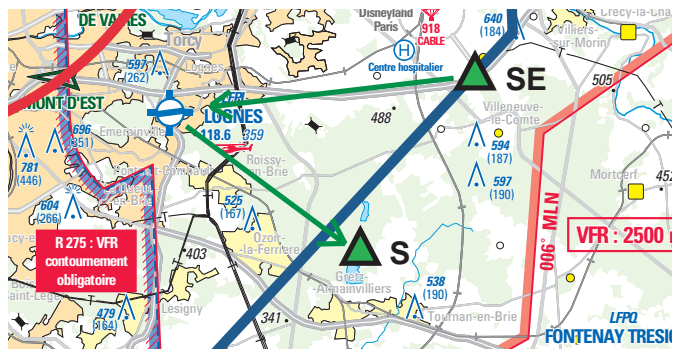
**Reminders:** distribution of fuel 100 LL unavailable (see AIP AD2 LFPO)

## 7.2. LOGNES EMERAINVILLE (LFPL) :

When the ZRT BLEUE is activated, this airfield must be reached using the most direct routes.

Flights outbound from or bound for Lognes are authorized under the following conditions:

- Transponder code:
  - o Outside LOGNES ATS hours: display the code given by the C2A2 when the flight intent was filed (see paragraph 2.3).
  - o During LOGNES ATS hours: display the code provided by Lognes on departure and arrival.
- For arrivals: announce the flight 3 minutes before SE on the airfield frequency 118.600 MHz (see paragraph 2.1).  
Outside LOGNES ATS hours, contact LE BOURGET VFR (135.700 MHz) 3 minutes before SE, then self-information on LOGNES A/A (118.600 MHz).
- For departures: take a heading towards exit point S (see paragraph 2.1) on LOGNES TWR or A/A (118.600 MHz) frequency.
- Aerodrome circling: no restrictions except for the provisions of paragraph 2.3 which remain applicable: file flight intent with French Air Force liaison unit present at the airfield.



## 7.3. CHELLES LE PIN (LFPH) AND ENGHEN MOISSELLES (LFFE) :

The activity of these 2 airfields is suspended while ZRT BLEUE is activated.

## 8. SECURITY MEASURES

Accreditation requests must be made between 18 April 2017 and 12 June 2017.

The activities concerned are listed in appendix X.

The military authorities may introduce additional real-time restrictions for aviation security reasons.

Users are invited to read the amending or complementary NOTAMs which may be published, on a daily basis.

### 8.1. PREFECTORALE ACCREDITATION

Except for Defense, customs, police and gendarmerie, and public safety aircraft which need to operate for their missions, authorized aircraft (VFR and IFR flights) bound for or outbound from Le Bourget, or having to operate in the ZIT, between 19 and 25 June 2017, must be **accredited** (pilot and aircraft) by the Prefecture in charge of security and safety of the Paris-Charles-de-Gaulle and Le Bourget airports.

**For activities 2 and 8 (see appendix X), accreditation does not give the right to land at Le Bourget airfield.**

Each pilot and each aircraft must be accredited. It is the responsibility of the aircraft operators or managers of the airlines concerned to request this accreditation from the Prefecture in charge of security and safety of Paris-Charles-de-Gaulle and Le Bourget airports, no later than 7 days before the flight, using a form, which is to be completed directly online, and sent with the supporting documents (4Mo maximum) as from 18 April 2017, on the following website:

[http://aeronefsiae.mybadgeonline.com/Aeronef/Aeronef\\_login.aspx](http://aeronefsiae.mybadgeonline.com/Aeronef/Aeronef_login.aspx)

Late or incomplete requests will not be handled.

Once the Prefecture in charge of security and safety at Paris-Charles-de-Gaulle and Le Bourget airports has examined the requests, it issues the requesting bodies with an accreditation number for the pilot and/or the aircraft, by email. In addition, each pilot must be associated with an aircraft so that the qualifications mentioned on the licence can be compared with the aircraft in question. These accreditation numbers are valid throughout the period from 19 to 25 June 2017. Prefectoral accreditation is not required for the period from 13 to 18 June included.

The accreditation numbers must be mentioned in box 18 of the flight plan.

An updated list of accreditations shall be sent to the C2A2 and the BPV on a daily basis.

## 8.2. REMINDER ABOUT INFRINGEMENTS

In compliance with the French Transport Code (articles L6211-4 and L6211-5), any aircraft entering a prohibited area without clearance must land at the nearest aerodrome outside this area, as soon as the pilot becomes aware of this infringement. If it is detected in flight, the pilot must comply with the first injunction, slow down, descend to the imposed altitude and land at the specified aerodrome.

Infringements to the provisions applicable to prohibited areas are liable to a fine (article 6232-2) of between 15 000 Euros and 45 000 Euros, and/or imprisonment from six months to one year.

Besides, the public authorities can retain the aircraft with which such infringement to the provisions of the French Transport Code was committed, on the spot, and the pilot can be liable to prosecution.

## 9. ADDITIONAL ACTIVITIES

Combat aircraft refuelling: activation of TSA 8A (Yvette axes), TSA 200 (Gisèle axes) or TSA 10 (Simone axes) possible.

## 10. AUTHORITIES TO CONTACT

### 10.1. BEFORE 13 JUNE 2017:

For any information relating to aviation security:

« Commandement de la Défense aérienne et des Opérations aériennes  
Sous-chefierie défense aérienne – bureau action aérospatiale de l'Etat  
Division DPSA  
Base Aérienne 942, Lyon Mont-Verdun  
BP19  
69579 LIMONEST CEDEX »  
Phone: +33(0)4.72.26.08.33 or +33(0)4.26.59.90.86

### 10.2. AS OF 13 JUNE INCLUDED:

For information and flight planning (flight intents) and/or initiation of emergency missions:

C2A2 (SALON du BOURGET common PC)

e-mail/Fax/Tel.: to be published by NOTAM

During ZIT ROUGE and ZRT BLEUE times of activity (see paragraph 1).

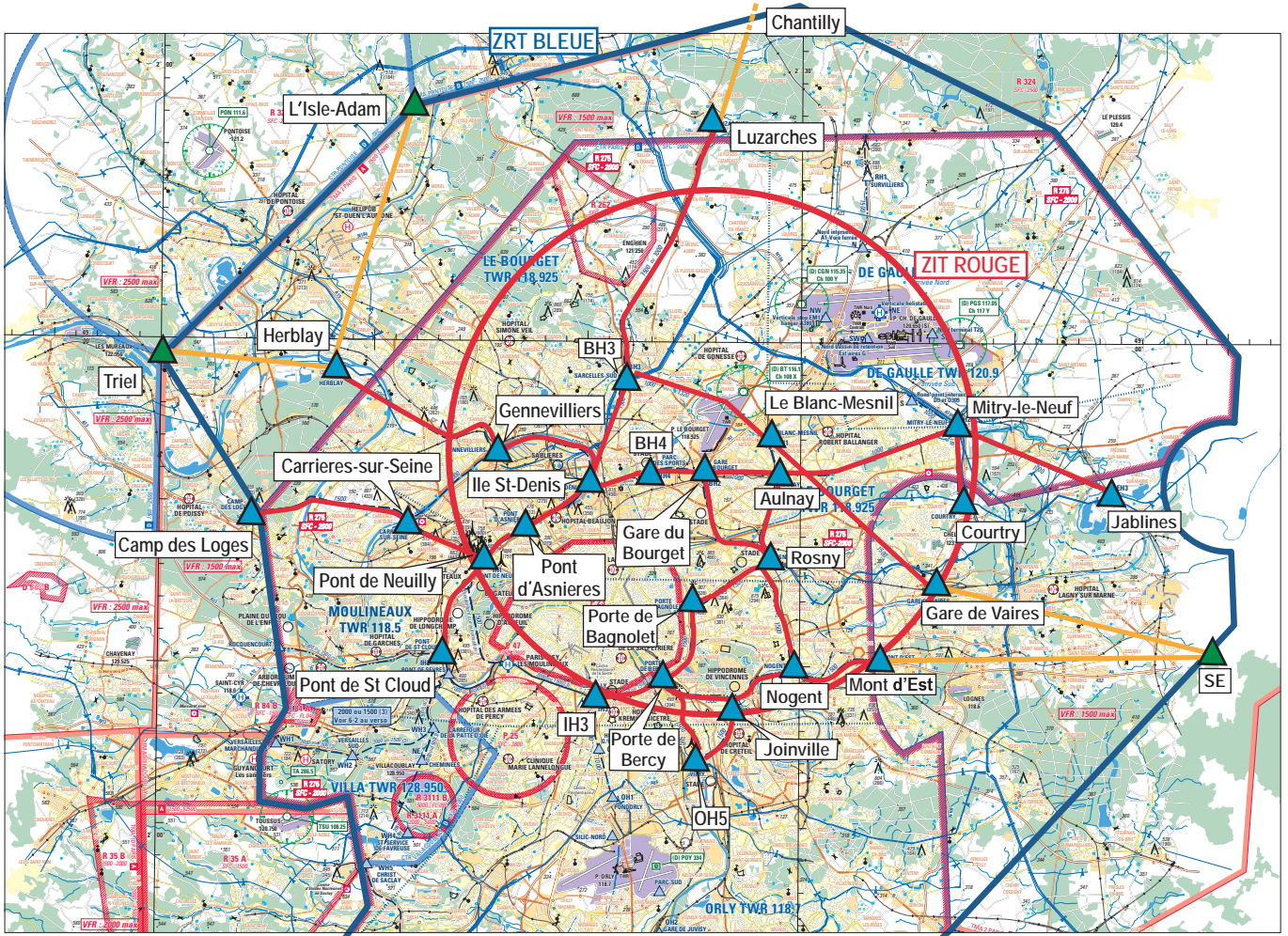
For any information about activities:






CRC of CINQ MARS LA PILE

CRC chief controller: Phone: +33 (0) 2.47.96 28.63 or 30.00 – Fax: +33(0) 2.47.96.28.62

INTENTIONNALLY BLANK

ANNEXE / APPENDIX IA  
 SALON DU BOURGET 2017 - MODIFICATIONS DES ITINERAIRES HELICOPTERES (MODIFICATIONS OF HELICOPTER ROUTES)  
 (Cf. carte itinéraires hélicoptères CTR Paris éd. 2017, annexe à l'arrêté du 08.02.1984) (ref 2017 helicopter routes chart Paris CTR)

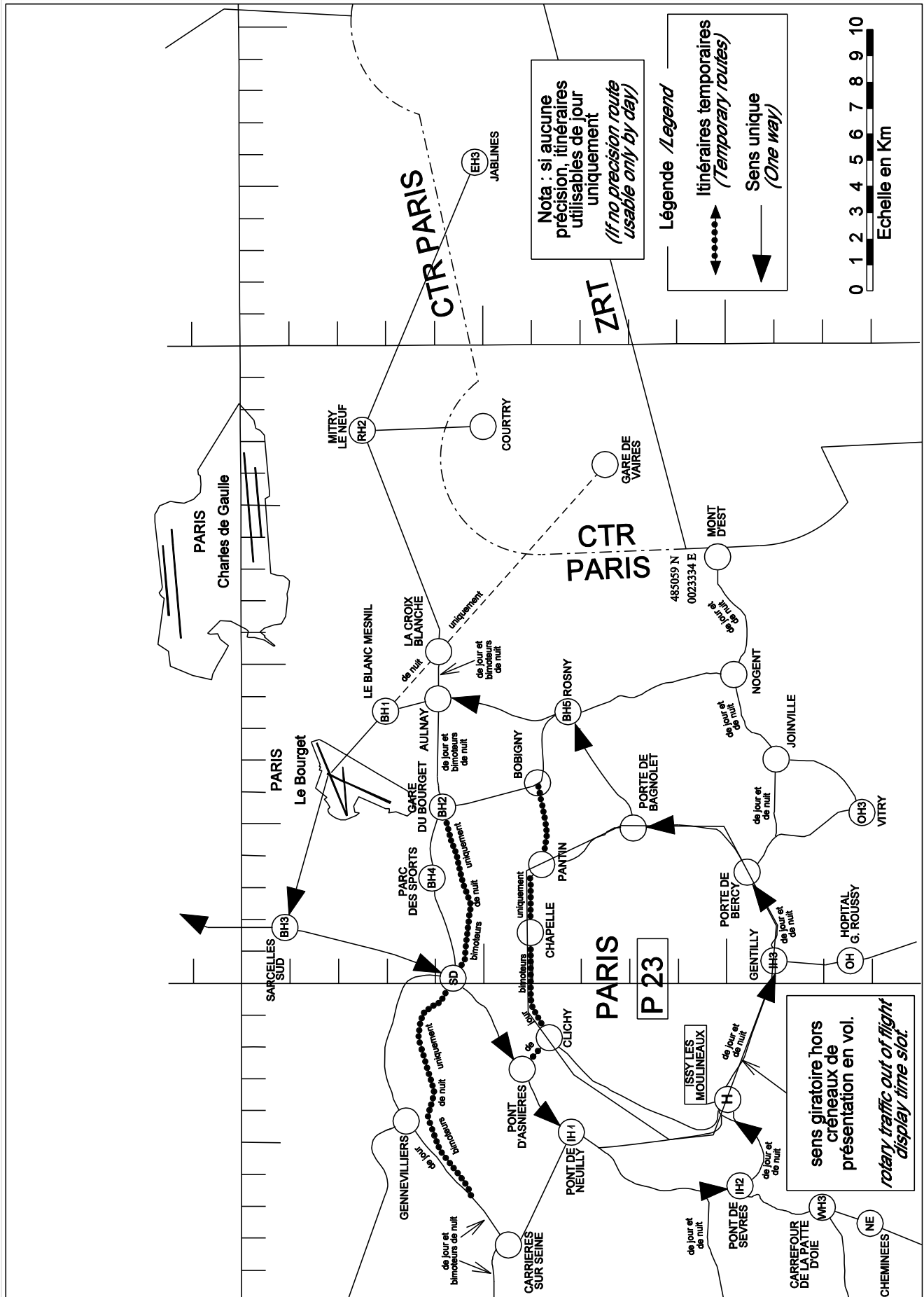


Legende		
	ZIT ROUGE	
	Itinéraires fermés sauf activités 1 à 4 et 8	<i>Closed VFR routes except for activities 1, 2, 3, 4 and 8</i>
	Itinéraires complémentaires avec points de report obligatoires	<i>Additional VFR routes with mandatory Reporting Points</i>
	Point de report obligatoire créé	<i>Created mandatory Reporting Point</i>
	Point de report déjà existant	<i>Existing Reporting Point</i>

ANNEXE / APPENDIX IB

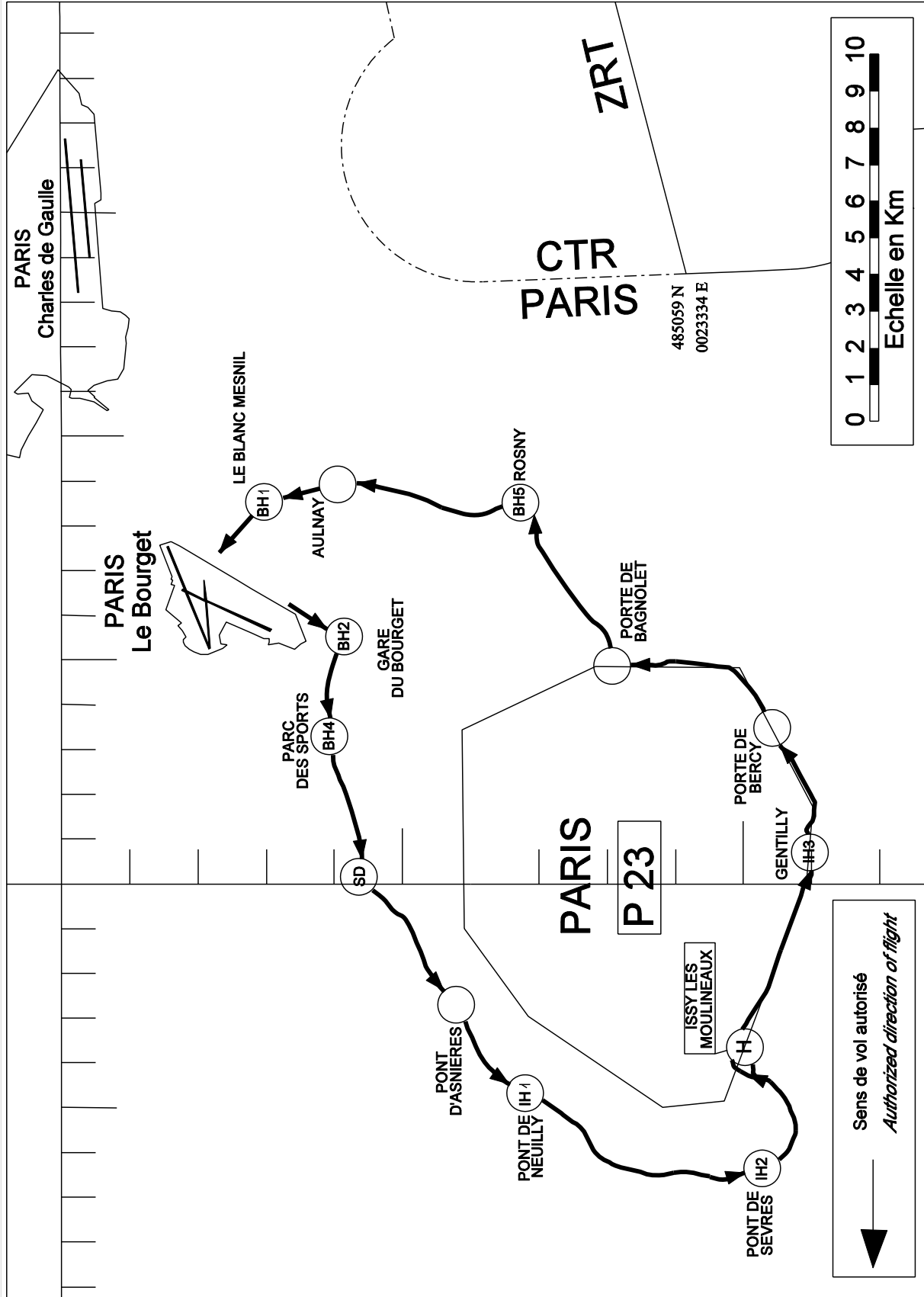
SALON DU BOURGET 2017 - MODIFICATIONS DES ITINERAIRES HELICOPTERES (MODIFICATIONS OF HELICOPTER ROUTES)

(Cf. carte itinéraires hélicoptères CTR Paris éd. 2017, annexe à l'arrêté du 08.02.1984) (ref 2017 helicopter routes chart Paris CTR)



**ANNEXE II**  
**SALON DU BOURGET 2017 - ITINERAIRES HELICOPTERES HORS CRENEAUX DE PRESENTATION EN VOL**  
 (HELICOPTER ROUTES OUT OF FLIGHT DISPLAY TIME SLOTS)

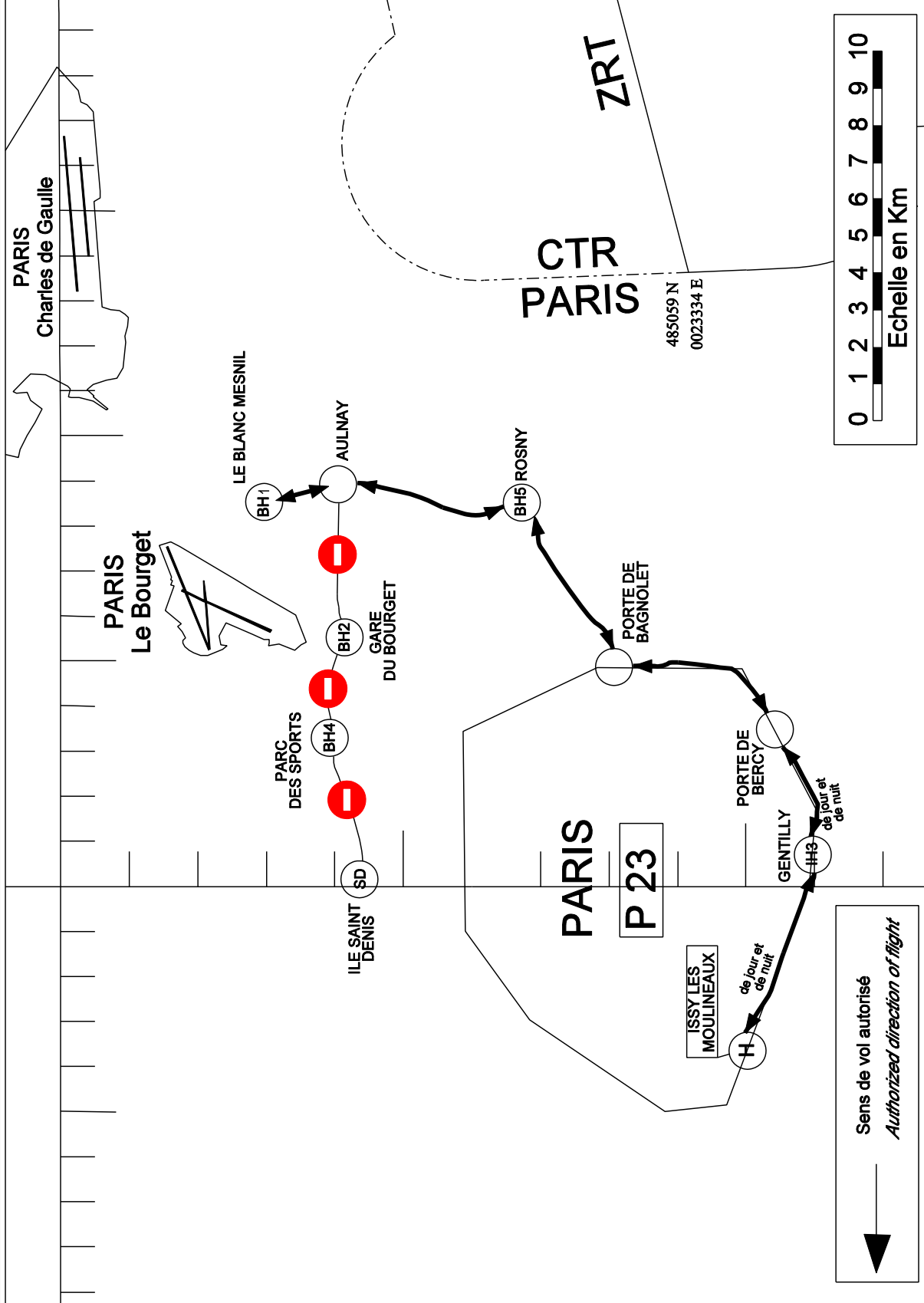
(Cf. carte SIA 1/100 000° itinéraires hélicoptères CTR Paris, annexe à l'arrêté du 08.02.1984) - (ref. helicopter routes chart Paris CTR)



ANNEXE III

SALON DU BOURGET 2017 - ITINERAIRES HELICOPTERES PENDANT LES CRENEAUX DE PRESENTATION EN VOL  
(HELICOPTER ROUTES OUT OF FLIGHT DISPLAY TIME SLOTS)

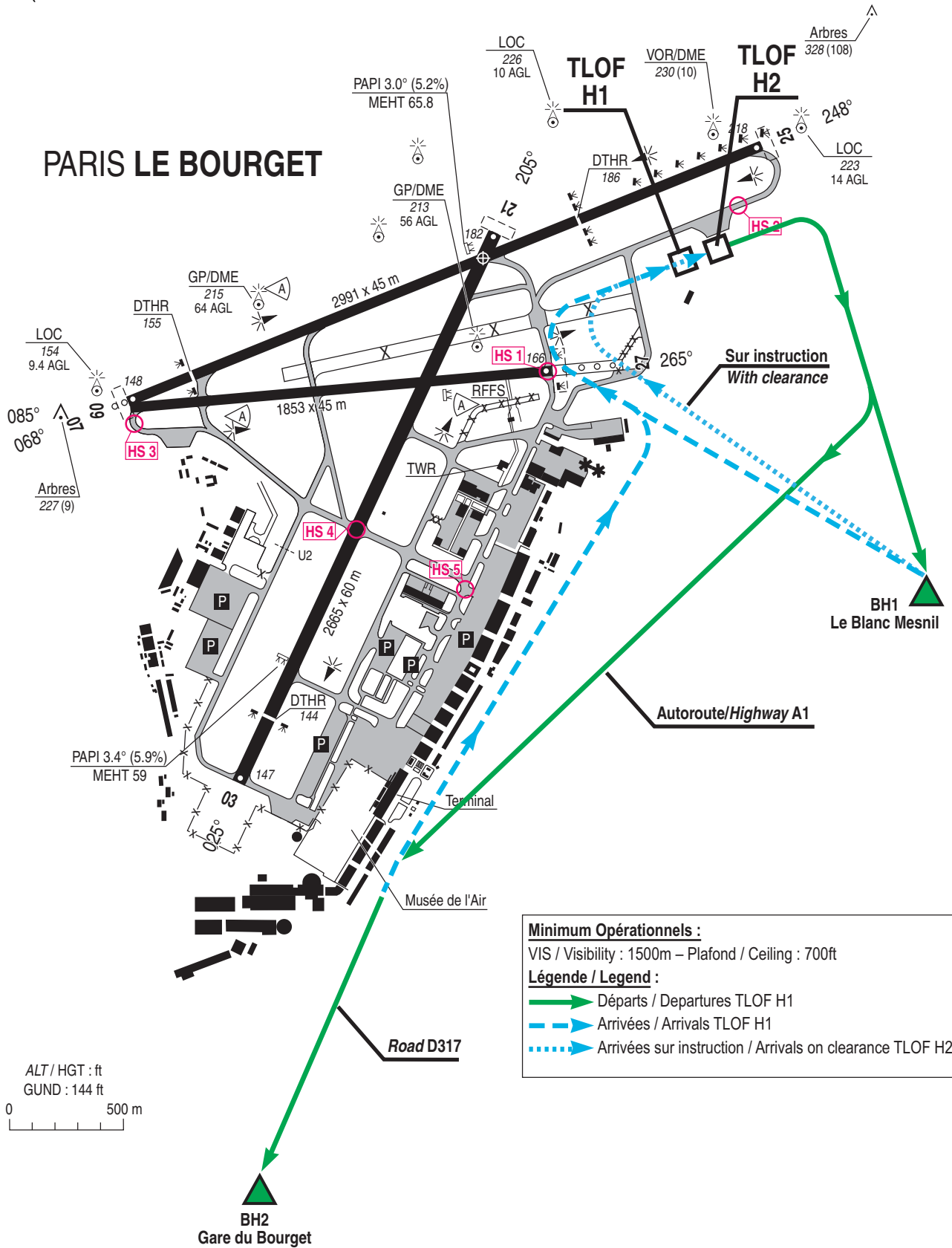
(Cf. carte SIA 1/100 000<sup>e</sup> itinéraires hélicoptères CTR Paris, annexe à l'arrêté du 08.02.1984) - (ref. helicopter routes chart Paris CTR)





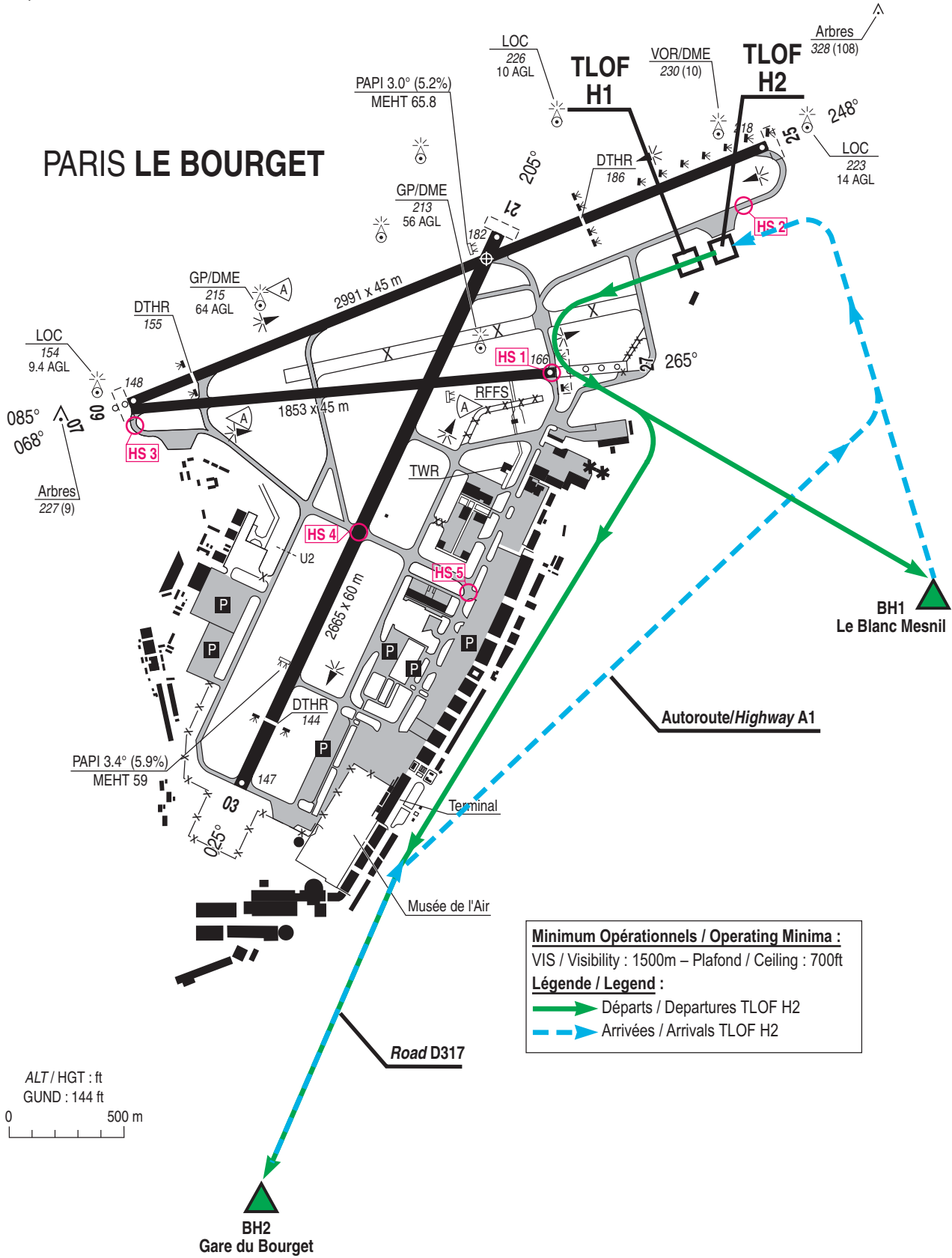
ANNEXE / APPENDIX IV

SALON DU BOURGET 2017 - HELISTATION ET CIRCUITS LOCAUX - HELICOPTERS ARR/DEP FACE A L'EST  
 (HELISTOP AND LOCAL CIRCLING - HELICOPTER ARR/DEP FACING EAST - ROUTES OUT OF FLIGHT DISPLAY TIME SLOTS)

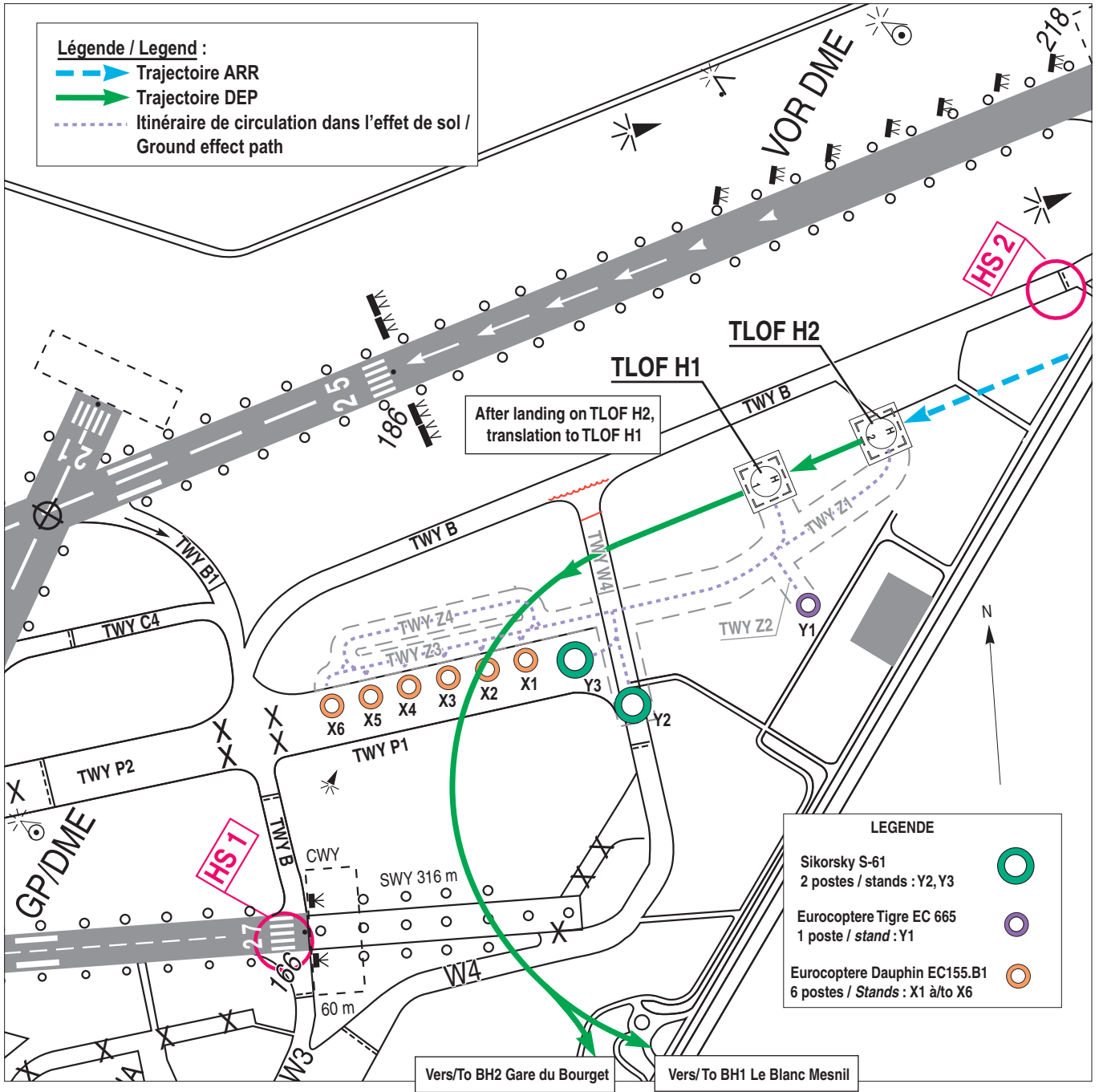


ANNEXE/APPENDIX V

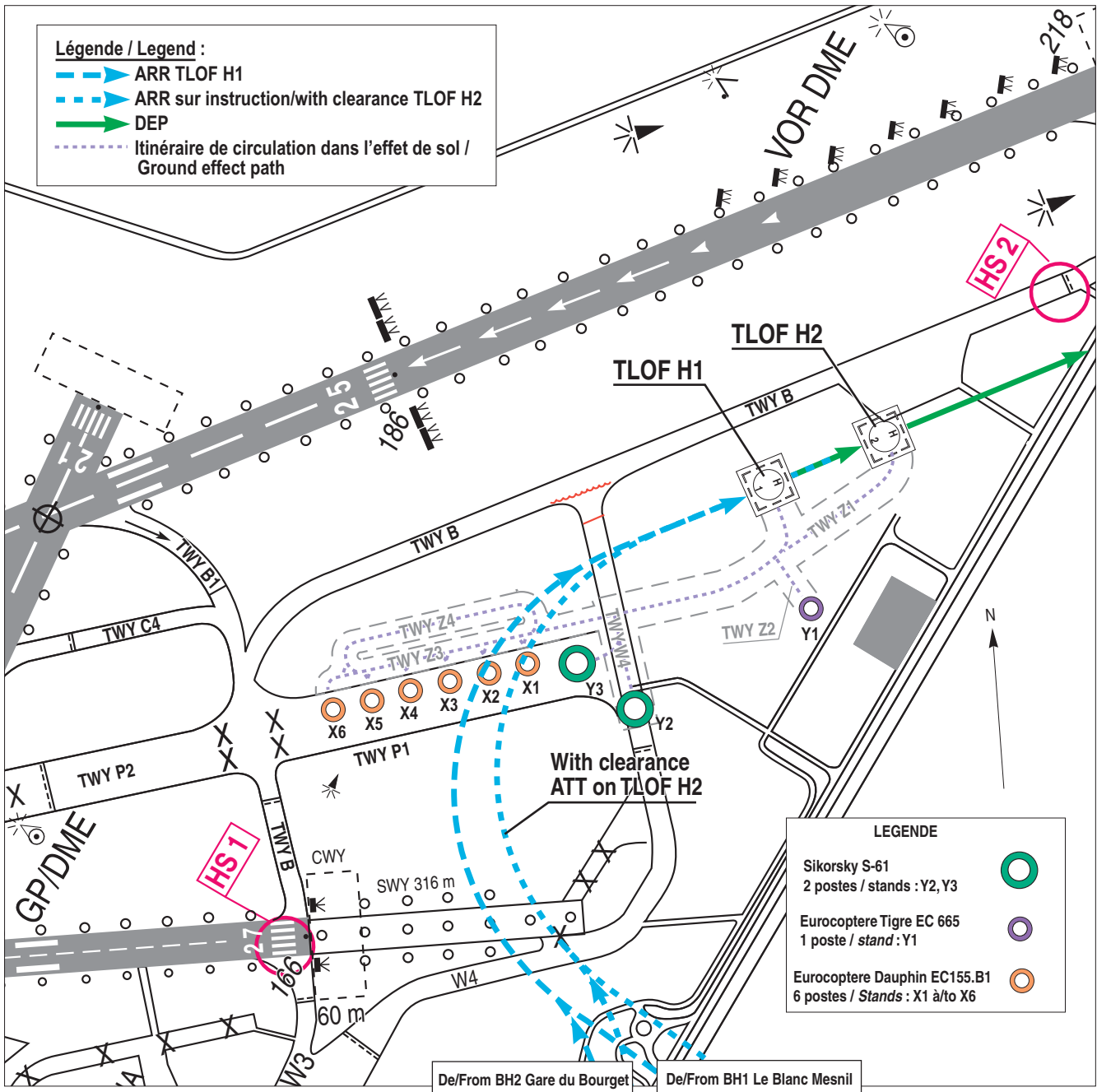
SALON DU BOURGET 2017 - HELISTATION ET CIRCUITS LOCAUX - HELICOPTERS ARR/DEP FACE A L'OUEST  
 (HELISTOP AND LOCAL CIRCLING - HELICOPTER ARR/DEP FACING WEST - ROUTES OUT OF FLIGHT DISPLAY TIME SLOTS)



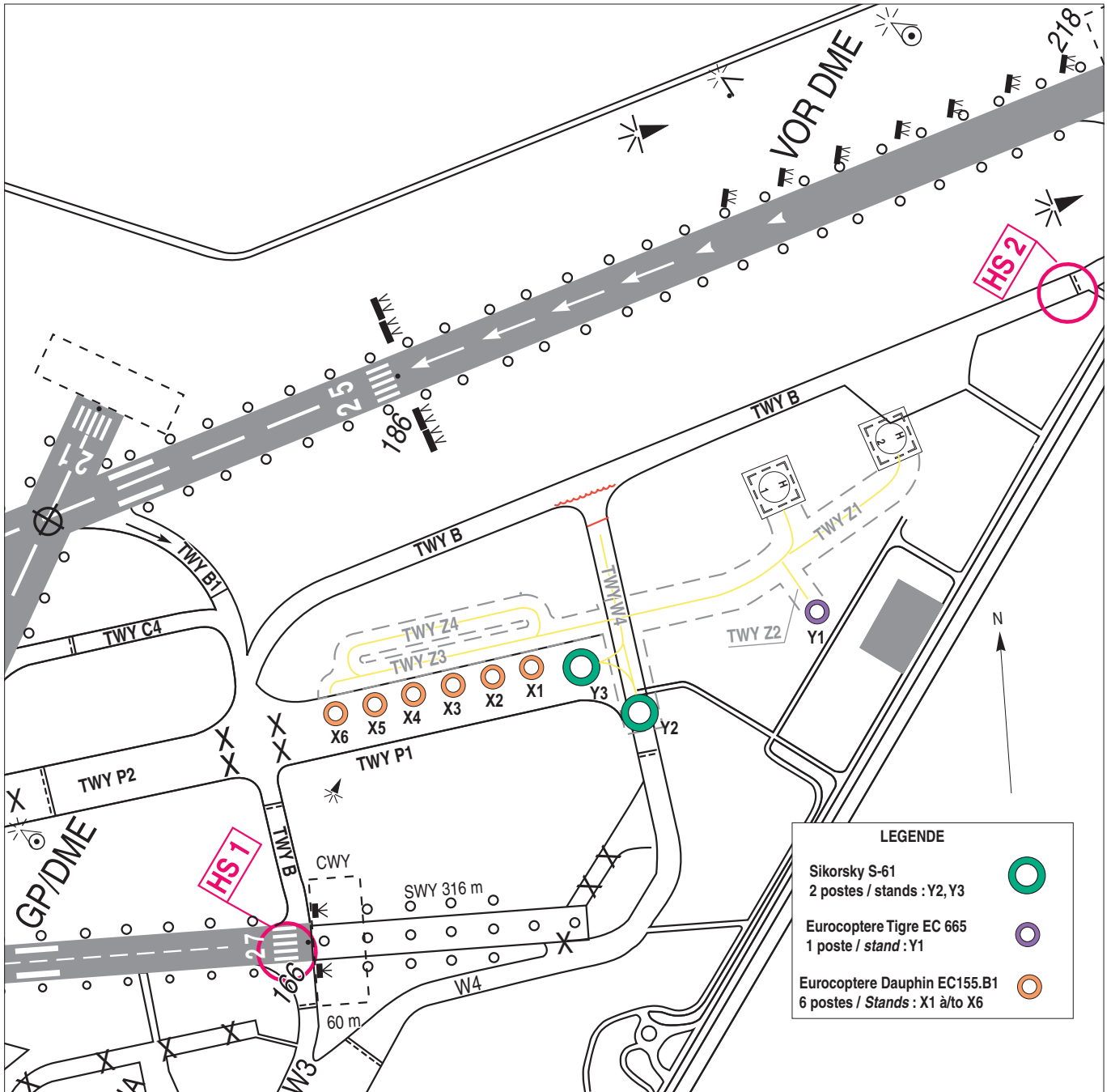
ANNEXE / APPENDIX VI  
 SALON DU BOURGET 2017 - VILLAGE HELICOPTERES – Configuration face à l'Ouest  
 (HELICOPTERS VILLAGE – Configuration West ward)



ANNEXE/APPENDIX VII  
 SALON DU BOURGET 2017 - VILLAGE HELICOPTERES – Configuration face à l’Est  
 (HELICOPTERS VILLAGE – Configuration East ward)



ANNEXE/APPENDIX VIII  
 SALON DU BOURGET 2017 – PARKINGS HELICOPTERES (HELICOPTERS STANDS)

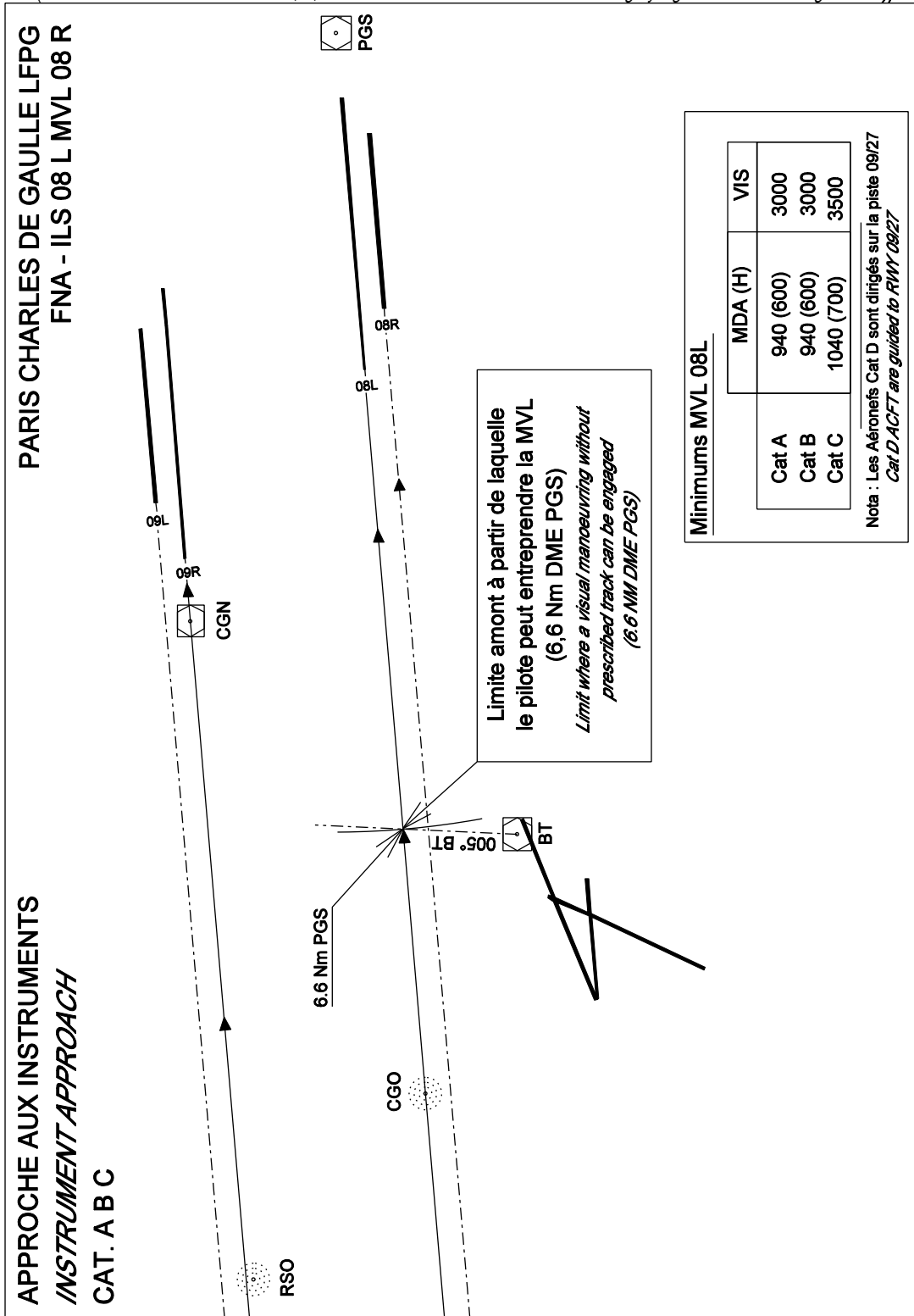


ANNEXE IX

SALON DU BOURGET 2017 – approche aux instruments CAT. A, B, C

(Réservée aux aéronefs de catégorie de turbulence *Moyen et Faible Tonnage*)

(INSTRUMENT APPROACH CAT. A, B, C - Reserved for with wake turbulence category "light and medium weight ACFT")



**ANNEXE X** English on following page  
**SYNTHESE DES DISPOSITIONS SPECIFIQUES PAR ACTIVITES ET PAR AERODROMES**

	Pénétration possible de		Accréditation (§. 8.1)	Plan de vol (§. 2.2)	Intention de Vol (§. 2.3)	Remarques
	ZIT	ZRT				
<b>ACTIVITE 1 :</b> Aéronefs français de la Défense, des douanes, des services de police, de la gendarmerie et de la sécurité civile ayant à intervenir dans le cadre de leurs missions.	<b>OUI</b>		<b>NON</b>		<b>OUI (3)</b>	Pénétration ZRT/ZIT <b>UNIQUEMENT</b> lorsque le contournement n'est pas compatible avec ces missions.
<b>ACTIVITE 2 :</b> Aéronefs de la santé, vols de recherche, d'assistance, d'évacuation sanitaire et de sauvetage, aéronefs devant intervenir pour des raisons techniques et de sécurité dans la zone.			Modification des itinéraires de transit VFR (cf. chapitre 2 et 3).			
<b>ACTIVITE 3 :</b> Aéronefs en CAG/VFR à destination ou en provenance du BOURGET et participant au SIAE..			Modification des itinéraires de transit VFR (cf. chapitre 2 et 3). Contact radio à établir 3 minutes avant la pénétration de la ZRT.			
<b>ACTIVITE II :</b> Aéronefs en CAG/IFR à destination ou en provenance du BOURGET.	<b>OUI</b>		<b>OUI (1)</b>	<b>OUI (2)</b>	<b>NON</b>	Le Bourget ne peut pas être utilisé comme terrain de dégagement.
<b>ACTIVITE II :</b> Aéronefs en CAG/IFR à destination ou en provenance de PARIS CHARLES DE GAULLE.						Evolutions sur les trajectoires publiées ou autorisées par les organismes de contrôle habituels.
<b>ACTIVITE II :</b> Aéronefs en CAG/IFR à destination ou en provenance d'ORLY, TOUSSUS, PONTOISE, BEAUVAIS et VILLACOUBLAY.	<b>NON</b>		<b>NON</b>			Des mesures de régulation de débit pouvant aller jusqu'à la suspension temporaire des vols pourront cependant être prises par les autorités militaires.
<b>ACTIVITE II :</b> Aéronefs en CAG/VFR à destination ou en provenance d'Orly ou de Lognes, à l'exception des vols de liaison avec LE BOURGET (cf. Activité 3).						Respect des procédures : <ul style="list-style-type: none"> <li>• Orly (cf. paragraphe 7.1)</li> <li>• Lognes (cf. paragraphe 7.2)</li> </ul> Contact radio à établir 3 minutes avant la pénétration de la ZRT.
<b>ACTIVITE 8 :</b> Aéronefs en CAG/VFR en provenance ou à destination de l'héliport de Paris-Issy-les-Moulineaux, à l'exception des vols de liaison avec LE BOURGET (cf. Activité 3).	<b>OUI</b>		<b>OUI (1)</b> Si utilisation de l'itinéraire hélicoptères IH3 – Porte de Bercy		<b>OUI</b>	Respect des procédures d'Issy Les Moulineaux (cf. chapitre 6) Contact radio à établir 3 minutes avant la pénétration de la ZRT.

(1) Le BPV gère les accréditations des aéronefs participant au SIAE – fermeture quotidienne du Terrain du BOURGET (Cf. paragraphes 4.1.1 et 8.1)

(2) Envoi aux adresses habituelles et au CDC de Cinq Mars La Pile (LFXOYWYX) ou au CDC de remplacement, avec, en case 18, les numéros d'accréditation pour les activités 2, 3, 4 et 8.

Les tours de piste ne sont pas tenus de déposer un plan de vol.

Les plans de vols ne sont pas obligatoires pour les aéronefs basés au Bourget, à Lognes, et à Issy-les-Moulineaux.

**Les aérodromes d'Enghien et Chelles sont fermés**

(3) Dans le cas d'un besoin de pénétration en ZIT, en préciser la nature (participation SIAE, urgence opérationnelle ou technique)

**APPENDIX X  
SUMMARY OF SPECIFIC PROVISIONS PER ACTIVITY AND PER AERODROME**

	Entry possible to		Accreditation (para. 8.1)	Flight plan (para. 2.2)	Flight intent (para. 2.3)	Comments			
	ZIT	ZRT							
<b>ACTIVITY 1:</b> French Defense, customs, police force, gendarmerie and public safety ACFT operating within the framework of their missions.	YES		NO		YES (3)	Entry in ZRT/ZIT <b>ONLY</b> when avoidance is not compatible with these missions. Change to VFR transit routes (see chapters 2 and 3). Radio contact 3 minutes before entering the ZRT.			
<b>ACTIVITY 2:</b> Health aircraft, search and rescue flights, assistance flights, medical evacuation flights, aircraft having to operate in the area for technical and safety reasons.			YES (1)			Change to VFR transit routes (see chapters 2 and 3). Radio contact to be established 3 minutes before entering the ZRT.			
<b>ACTIVITY 3:</b> Aircraft operating under GAT/VFR conditions outbound from or bound for LE BOURGET and taking part in the International Paris Air Show.			YES (2)			Le Bourget cannot be used as diversion field. Changes to routes published or authorized by usual control units. Flow control measures may be applied, which could go as far as temporary suspension of the flights by the military authorities.			
<b>ACTIVITY 4:</b> Aircraft operating under GAT/IFR conditions outbound from or bound for LE BOURGET.			NO			Compliance with procedures: • Orly (see paragraph 7.1) • Lognes (see paragraph 7.2) Radio contact to be established 3 minutes before entering the ZRT.			
<b>ACTIVITY 5:</b> Aircraft operating under GAT/IFR conditions outbound from or bound for PARIS CHARLES DE GAULLE			NO			NO	YES (1) If use of IH3 - Porte de Bercy helicopter route	YES	Compliance with Issy Les Moulineaux procedures (see chapter 6) Radio contact to be established 3 minutes before entering the ZRT.
<b>ACTIVITY 6:</b> Aircraft operating under GAT/IFR conditions outbound from or bound for ORLY, TOUSSUS, PONTOISE, BEAUVAIS and VILLACOUBLAY.									
<b>ACTIVITY 7:</b> Aircraft operating under GAT/VFR conditions outbound from or bound for Orly or Lognes, except for flights connecting with LE BOURGET (see activity 3).									
<b>ACTIVITY 8:</b> Aircraft operating under GAT/VFR conditions outbound from or bound for Paris-Issy-les-Moulineaux heliport, except for flights connecting with LE BOURGET (see activity 3).			YES						

(1) The BPV manages the accreditations of the aircraft participating in the International Paris Air Show - daily closure of LE BOURGET airfield (see paragraphs 4.1.1 and 8.1)

(2) Send to usual addresses and to Cinq Mars La Pile CDC (LFXOYWX) or to the replacement CDC, with the accreditation numbers for activities 2, 3, 4 and 8 in box 18.

Circling aircraft are not required to file a flight plan.

Flight plans are not compulsory for aircraft **based** at Le Bourget, Lognes and Issy-les-Moulineaux.

**Enghien and Chelles airfields are closed**

(3) In the event of the need to enter the ZIT, please specify the reason (participation in the International Paris Air Show, operational or technical emergency, etc.)



ANNEXE / APPENDIX XI  
LISTE DES AERODROMES POURVUS DE DETACHEMENT DE LIAISON (DL) ARMEE DE L'AIR /  
LIST OF AERODROMES WITH AIR FORCE LIAISON UNIT (DL) PRESENT

- Chavenay Villepreux (LFPX),
- Le Plessis-Belleville (LFPP),
- Lognes Emerainville (LFPL),
- Meaux Esbly (LFPE),
- Melun (LFPM),
- Paris Charles de Gaulle (LFPG),
- Paris Issy les Moulineaux (LFPI),
- Paris Le Bourget (LFPB),
- Paris Orly (LFPO),
- Persan-Beaumont (LFPA),
- Pontoise Corméilles en Vexin (LFPT),
- St-Cyr-l'Ecole (LFPZ),
- Toussus Le Noble (LFPN).

Les numéros de téléphone de ces détachements de liaison seront transmis par NOTAM. /  
The telephone numbers of these Air Force liaison units will be communicated by NOTAM.